

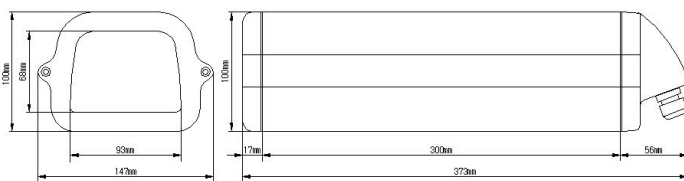
## Features

GHG-120 is durable and compact indoor camera housing designed to protect CCTV camera from dust in indoor environments. This housing is constructed from heavy-duty aluminum with a light-gray UV coating finished.

## SPECIFICATIONS

ITEM	SPECIFICATION	
Model No.	GHG-120	
USE	Indoor	
Description	CCTV Camera Housing	
Features	Dustproof, close type	
Material	Body	Aluminum
	Front, Rear	ABS
Operating Conditions	Temperature	-1.5°C ~ +45°C
	Wind velocity	80MPH
	Humidity	100%
Weight	1.3 kg	
Size(m/m)	External	147(W)x100(H)x373(D)
	Internal	100(W)x80(H)x290(D)
Color	LIGHT GRAY	
Accessory	1/4-20UNF-1EA, SCREW-1EA, SPRING-1EA, PLAT WASHER-1EA	

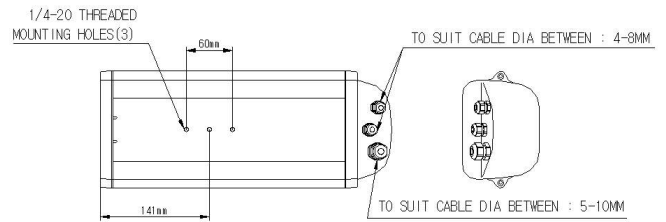
## OUTLINE DIMENSIONS



## CAUTIONS

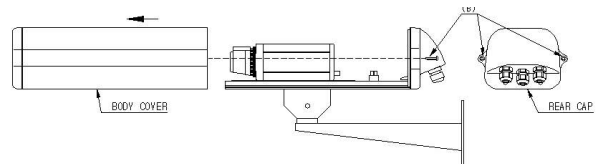
- Don't install near sulfurous, salt.
- Don't put a metal, the inflammable in it. These may bring a fire, a short circuit or an electric shock.
- Clean the window using a natural detergent. Don't use thinner, benzenes etc.
- Observe the safe rule when install it

## ● MOUNTING BASE

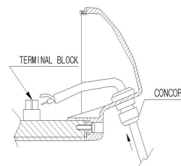


## ● THE WAY OF OPEN BODY COVER

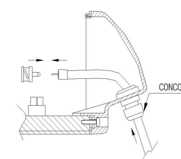
- Unscrew two pieces of screw (B) on the rear cap, and separate the body cover of housing in direction of arrow.
- Control the camera and lens after separate the body cover of housing.



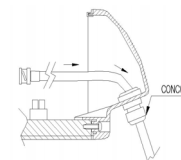
## ● THE WAY OF CONNECTION BNC CONNECTOR



Insert cable from the exterior into concord and then connect it BNC connector.



Connect cable to BNC connector and insert cable into concord in the interior.



After insert cable from the exterior to concord connect to terminal block

### **Honeywell co., Ltd.**

18F, Kukje Center Building, 191, Hangangro-2ga, Yongsan-gu, Seoul 140-702, Korea

Tel 82-2-799-6117

Fax 82-2-749-6119

<http://www.honeywell.co.kr/cctv>