

## Features

GHG-120 is durable and compact in/outdoor camera housing designed to protect CCTV camera from dust in in/outdoor environments. This housing is constructed from heavy-duty aluminum with a light-gray UV coating finished.

## SPECIFICATIONS

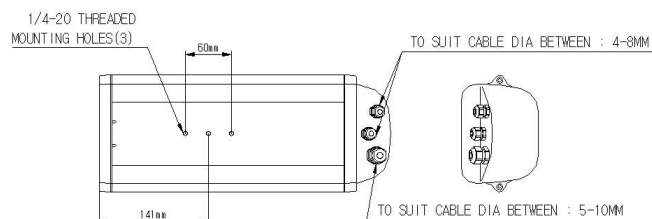
ITEM	SPECIFICATION	
Model No.	GHG-140	
USE	In/Outdoor	
Description	CCTV Camera Housing	
Features	Dustproof, close type	
Material	Body	Aluminum
	Front, Rear	ABS
Operating Conditions	Temperature	-1.5°C ~ +45°C
	Wind velocity	80MPH
	Humidity	100%
Weight	1.5 kg	
Size(m/m)	External	154(W)x124(H)x383(D)
	Internal	100(W)x80(H)x350(D)
Color	LIGHT GRAY	
Accessory	1/4-20UNF-1EA, SCREW-1EA, SPRING-1EA, PLAT WASHER-1EA	

## OUTLINE DIMENSIONS

## CAUTIONS

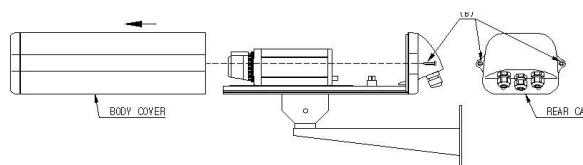
- Don't install near sulfurous, salt.
- Don't put a metal, the inflammable in it. These may bring a fire, a short circuit or an electric shock.
- Clean the window using a natural detergent. Don't use thinner, benzenes etc.
- Observe the safe rule when install it

## MOUNTING BASE

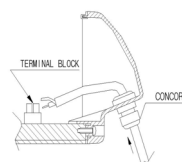


## Installation

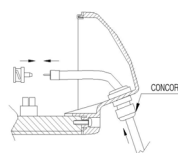
- Unscrew two pieces of screw (B) on the rear cap, and separate the body cover of housing in direction of arrow.
- Control the camera and lens after separate the body cover of housing,



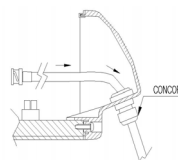
## CONNECTION



Insert cable from the exterior into concord and then connect it BNC connector.



Connect cable to BNC connector and insert cable into concord in the interior.



After insert cable from the exterior to concord connect to terminal block

## Honeywell co., Ltd.

18F, Kukje Center Building, 191, Hangangro-2ga, Yongsan-gu, Seoul 140-702, Korea

Tel 82-2-799-6117  
Fax 82-2-749-6119

<http://www.honeywell.co.kr/cctv>