

MESSRS:

Date of issue : 11. Mar . 2002

Issue No : V 2.5

SPECIFICATONS

Product Name	GMC-755N/P
Function	25x AF Zoom camera Module
Part No.	
Approval	

Issued by :

Checked by :

Approved by :

Honeywell co., Ltd
CEHS SBE Security CoE

1. General Specifications

1.1 Specifications of GMC-755N , NTSC

1) Scanning system	2:1 interlace
-- Scanning frequency (H)	15.734 kHz
-- Scanning frequency (V)	59.94 Hz
2) Pickup device	1/4 " SONY Super HAD CCD
3) Total pixels	410,000 pixels (811(H) X 508(V))
4) Effective pixels	380,000 pixels (768(H) X 494(V))
5) Signal to Noise ratio	more than 48 d B
6) Horizontal Resolution	more than 470 TV lines
7) Lens specifications	
-- Focal length	f = 3.8 ~ 95 mm
-- Zoom ratio	25 x
-- Relative aperture	F 1.6 (WIDE) ~ F 3.7 (TELE)
-- Lens construction	11 Elements in 8 groups + IR cut filter (including 2 aspherical lenses)
-- Focus and Zoom motor	Stepping motor
-- Iris	Galvanometer
8) Digital zoom ratio	x26 ~ x200 can be adjustable
9) Sync system	Internal / External (VD pulse lock) Auto detecting selectable
10) Minimum illumination	1.0 lx (30 IRE) ; Day & night Off (Color) 0.1 lx(30 IRE) ; Day & night ON (black & white) *1 0.01 lx ; Field integration x128 ON (Option) *2
*1 : Can be selectable through removal of IR cut filter in lens	
IR (Infrared) cut filter on mode ---> color camera	
IR (Infrared) cut filter off mode ---> black & white camera	
*2 : Sensitivity improvement function by combining the CCD exposure time control and the field memory. (x2 ~ x128 selectable)	
11) On screen display	On / Off
12) Video output	Composite output 75 ohm terminated 1.0Vpp
13) Camera remote control	RS-232C , RS-422 , RS-485 (Option)
14) Camera detail functions	
① Zoom speed	Minimum speed 3.0 sec (TELE - WIDE)
② Focus speed	Less than 1.0 sec
③ Iris speed	Less than 1.2 sec
④ temperature compensation	zoom curve compensation Iris position compensation
⑤ brightness control	15 steps
⑥ white balance control	ATW / AWC / INDOOR / OUTDOOR / MWB
⑦ AGC control	High / Medium / Low
⑧ Shutter speed control	28 Steps
⑨ Flicker less	ON / Off (Shutter speed 1/100)
⑩ Back light compensation	On / Off / Auto
⑪ Zoom / Focus preset	64 position preset
⑫ Day & Night mode	On / Off / Auto
⑬ Mirror mode	On / Off
⑭ Negative mode	On / Off
15) Operating temperature	-5 °C ~ 60 °C (Recommendation -5 °C ~ 50 °C)
16) Operation Humidity	0 % RH ~ 90 % RH
17) Storage temperature	-10 °C ~ 60 °C , 0 % RH ~ 90 % RH
18) Supplied power	12 V ± 1 V
19) Power consumption	Max 4.5 W (Field integration)
20) Dimensions (W x H x D)	59.6 x 66.6 x 94.7 (W x H x D)
21) Weight	0.35 Kg

1-2. Specifications of GMC-755P , PAL

1) Scanning system	2:1 interlace
-- Scanning frequency (H)	15.625 kHz
-- Scanning frequency (V)	50 Hz
2) Pickup device	1/4 " SONY Super HAD CCD
3) Total pixels	470,000 pixels (795(H) X 596(V))
4) Effective pixels	440,000 pixels (752(H) X 582(V))
5) Signal to Noise ratio	more than 48 d B
6) Horizontal Resolution	more than 450 TV lines
7) Lens specifications	
-- Focal length	f = 3.8 ~ 95 mm
-- Zoom ratio	25 x
-- Relative aperture	F 1.6 (WIDE) ~ F 3.7 (TELE)
-- Lens construction	11 Elements in 8 groups + IR cut filter (including 2 aspherical lenses)
-- Focus and Zoom motor	Stepping motor
-- Iris	Galvanometer
8) Digital zoom ratio	x26 ~ x200 can be adjustable
9) Sync system	Internal / External (VD pulse lock) Auto detecting selectable
10) Minimum illumination	1.0 lx (30 IRE) ; Day & night Off (Color) 0.1 lx (30 IRE) ; Day & night ON (black & white) *1 0.01 lx ; Field integration x128 ON (Option) *2
*1 :	Can be selectable through removal of IR cut filter in lens IR (Infrared) cut filter on mode ---> color camera IR (Infrared) cut filter off mode ---> black & white camera
*2 :	Sensitivity improvement function by combining the CCD exposure time control and the field memory. (x2 ~ x128 selectable)
11) On screen display	On / Off
12) Video output	Composite output 75 ohm terminated 1.0Vpp
13) Camera remote control	RS-232C , RS-422 , RS-485 (Option)
14) Camera detail functions	
① Zoom speed	Minimum speed 3.0 sec (TELE - WIDE)
② Focus speed	Less than 1.0 sec
③ Iris speed	Less than 1.2 sec
④ temperature compensation	zoom curve compensation Iris position compensation
⑤ brightness control	15 steps
⑥ white balance control	ATW / AWC / INDOOR / OUTDOOR / MWB
⑦ AGC control	High / Medium / Low
⑧ Shutter speed control	28 Steps
⑨ Flicker less	ON / Off (Shutter speed 1/120)
⑩ Back light compensation	On / Off / Auto
⑪ Zoom / Focus preset	64 position preset
⑫ Day & Night mode	On / Off / Auto
⑬ Mirror mode	On / Off
⑭ Negative mode	On / Off
15) Operating temperature	-5 °C ~ 60 °C (Recommendation -5 °C ~ 50 °C)
16) Operation Humidity	0 % RH ~ 90 % RH
17) Storage temperature	-10 °C ~ 60 °C , 0 % RH ~ 90 % RH
18) Supplied power	12 V ± 1 V
19) Power consumption	Max 4.5 W (Field integration)
20) Dimensions (W x H x D)	59.6 x 67.6 x 94.7 (W x H x D)
21) Weight	0.35 Kg

2. Quality assurance tests

1) Normal function & performance tests

- Condition : $25\text{ }^{\circ}\text{C} \pm 5\text{ }^{\circ}\text{C}$, 60 %RH
- Check the camera's basic function and performance with given test procedure .

2) Operating temperature and humidity

- Condition : $-5\text{ }^{\circ}\text{C} \sim 60\text{ }^{\circ}\text{C}$, 0%RH ~ 90%RH (Recommendation $-5\text{ }^{\circ}\text{C} \sim 50\text{ }^{\circ}\text{C}$)

3) Accelerated life test

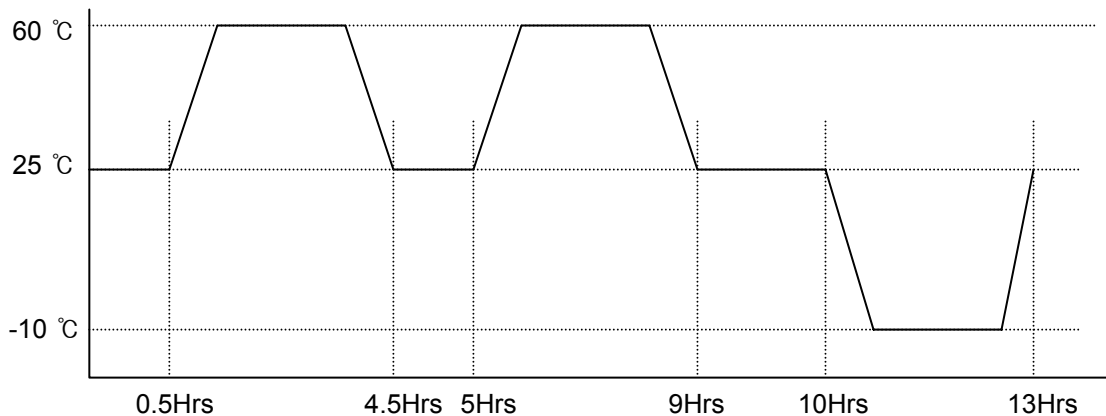
- Condition : $60\text{ }^{\circ}\text{C}$, 90 %RH , 168Hrs
- Camera status : Apply a proper power to testing unit.
- Check basic function and performance of camera.

4) Tests for storage temperature and humidity with carton

- Condition : $-10\text{ }^{\circ}\text{C}$, 0%RH , 24Hrs
- $60\text{ }^{\circ}\text{C}$, 90%RH , 24Hrs
- After Leaving the carton at above condition , check the function and performance of camera.

5) Accelerated cycling test

- Condition : $-10\text{ }^{\circ}\text{C} \sim 60\text{ }^{\circ}\text{C}$, 0%RH ~ 90%RH
- Camera status : Apply a proper power to testing unit.
- Cycle conditions :



- Cycling tests are performed 10 times repeatedly . (Total test times are 130 hours)
- After this test , moving it at normal temperature and check the camera's functions 2 hours later.

6) Vibration test (with carton)

- Condition : 1G , frequency 10 ~ 55 Hz
- Check the camera's operations after testing each directions X,Y,Z for 2 hours duration of a vibration.

7) Drop test (with carton)

- Drop the testing unit under conditions of height 0.8m , one corner , 3 edges , 6 surfaces .
- Check the camera's operations .

8) Electrostatic test

- Condition : In air 8KV , contact 4KV
- During this test is performed , Check the camera operations .

9) EFT/B test

- Condition : Power line ---> more than 1 levels (less than 1KV)
- signal and communications line ---> more than 3 levels (less than 1KV)

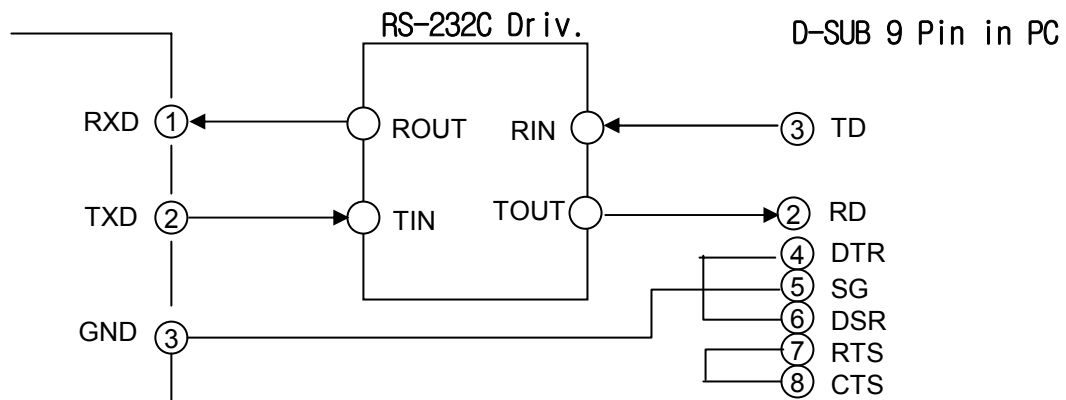
3. User interface guide for installation

- 1) Connector Pin configurations ; Maker : ELCO , part no. : 00-6200-097-052-800
Description : 1.0mm pitch flexible Ribbon cable

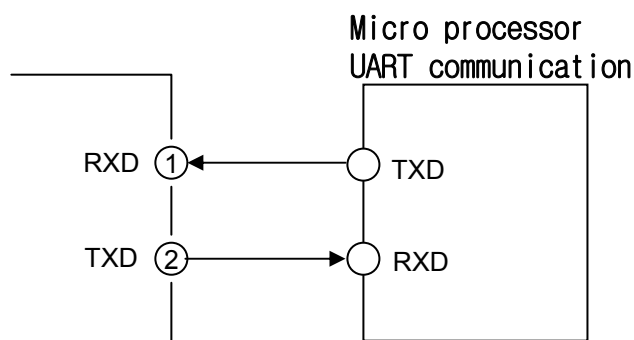
Pin description	I/O	Explanation
1 RXD	I	For communication input from camera , CMOS level
2 TXD	O	For communication output to camera , CMOS level
3 GND		Pair ground with communication
4 12V IN	I	DC Power supply input , 12V \pm 1V
5 GND		Pair ground with power supply
6 VIDEO OUT	O	Composite video output , (75 ohm terminated)
7 GND		Pair ground with video output
8 VD Pulse IN	I	For external synchronization , vertical sync pulse in
9 GND		Pair ground with external VD pulse input

- 2) Applications for camera control

- (a) Camera control method through communication with PC



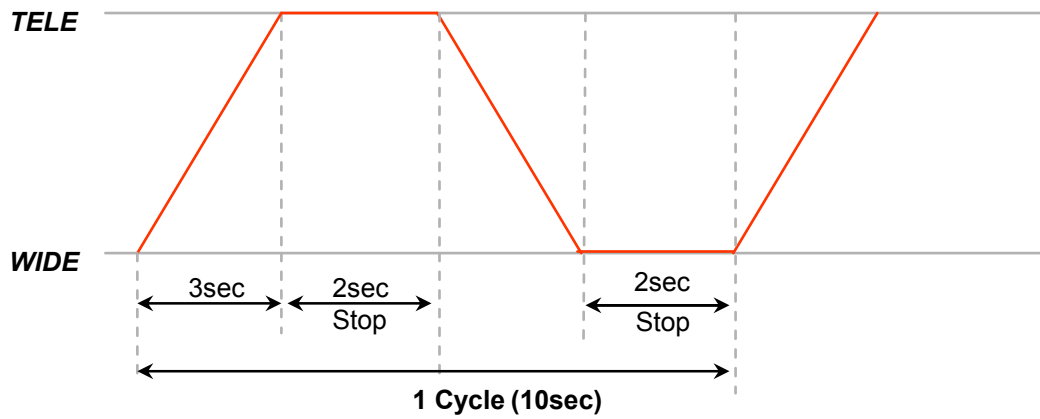
- (b) Camera control method through other micro processor



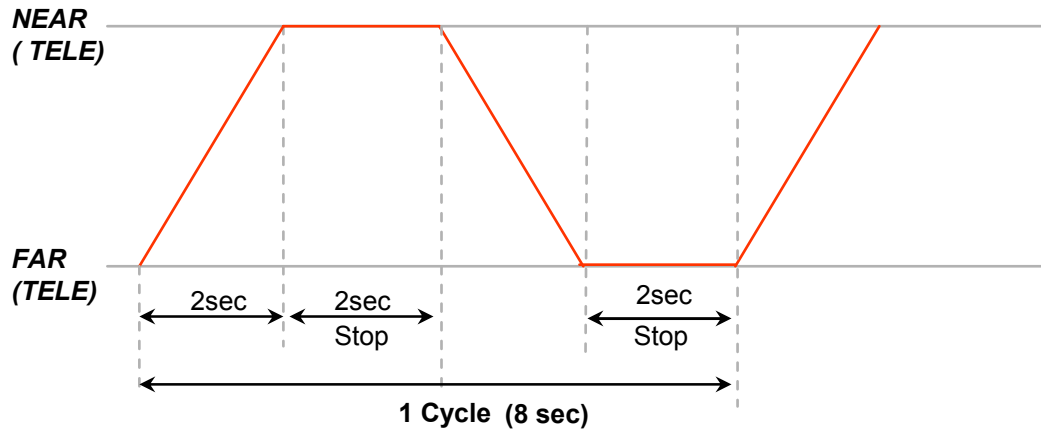
- 3) Line pulse (vertical drive pulse) for external synchronization (falling edge triggering)
; input level range : 3.0 ~ 5.0 V
input frequency range : in case of NTSC 60 Hz \pm 0.5Hz
in case of PAL 50 Hz \pm 0.5Hz

4. LENS TEST

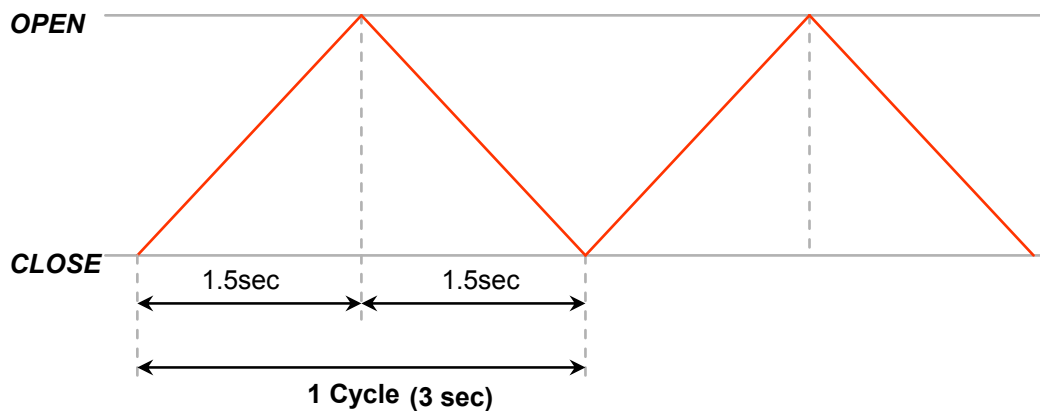
1) Zoom Motor ; More than 1,000,000 cycles



2) Focus motor ; More than 2,000,000 Cycles



3) Iris Meter ; More than 1,000,000 Cycles



5. User's manual for operations

Refer to Appendix A.

6. Measurement specifications

Refer to Appendix B.

7. Communication protocol

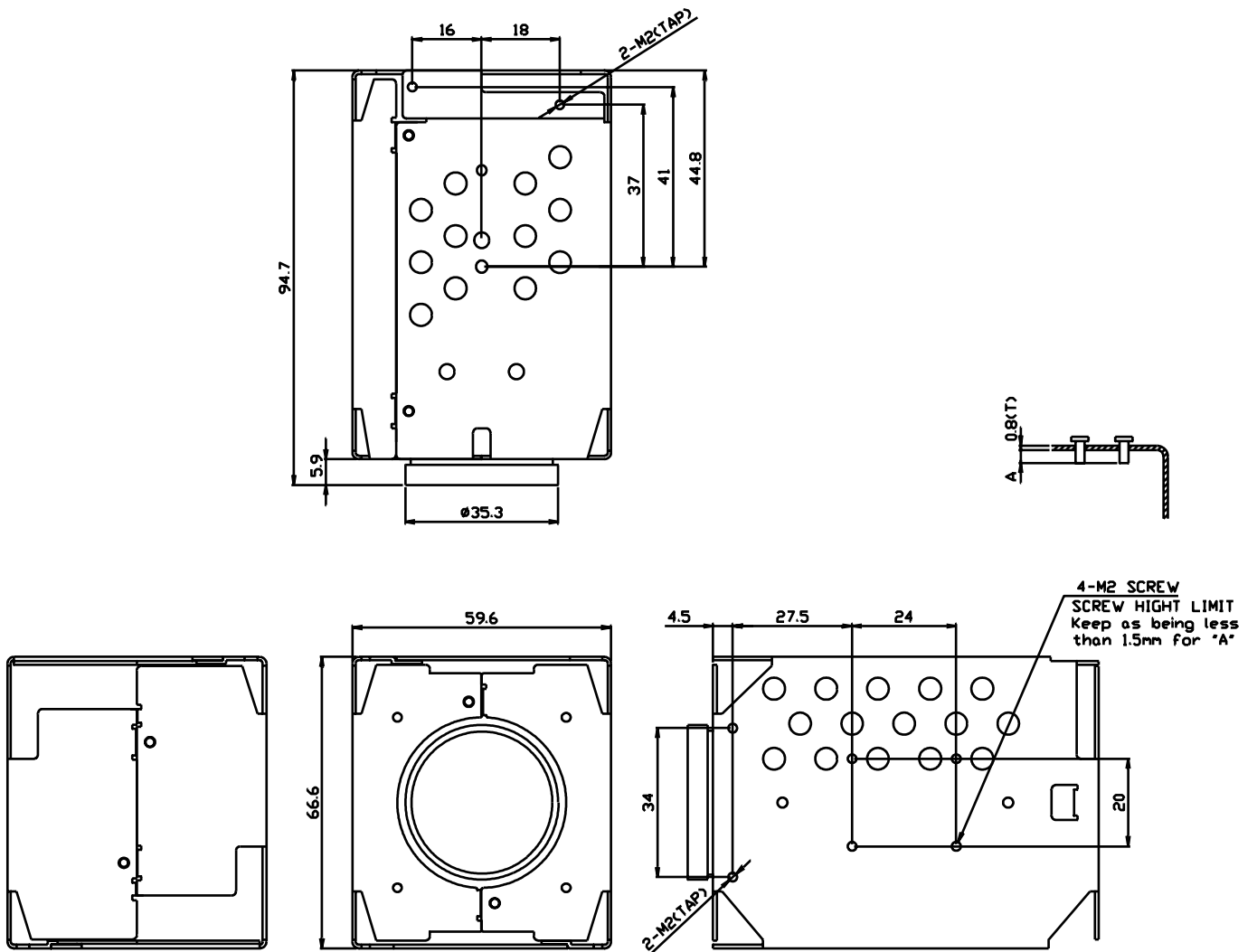
Refer to Appendix C.

8. Optional accessories

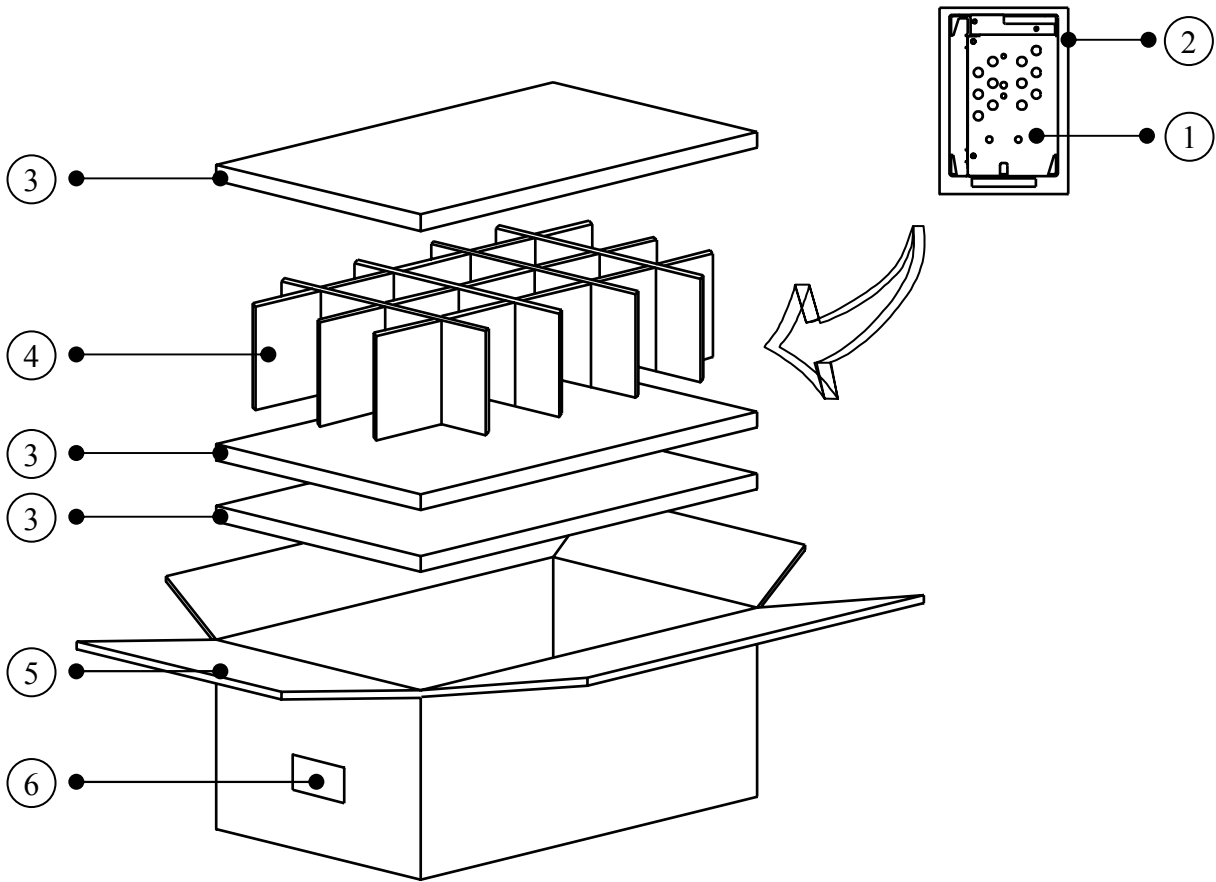
Flat-flex cable 200 mm (P/N : G-958076-09-200)

Remote control board for installation (P/N :)

9. Overall Dimensions



10. Carton Dimensions



NO	ITEM	ITEM NO	QT'Y
1	MODULE ASS'Y		20
2	AIR BAG	G-110160-A	20
3	INNER-B	G-110157	0.15
4	INNER-A	G-110156	0.05
5	BOX	G-110155-A	0.05
6	LABEL PACKING	G-107155-200	0.05
7	9P FFC CABLE	G-958076-09-200	20