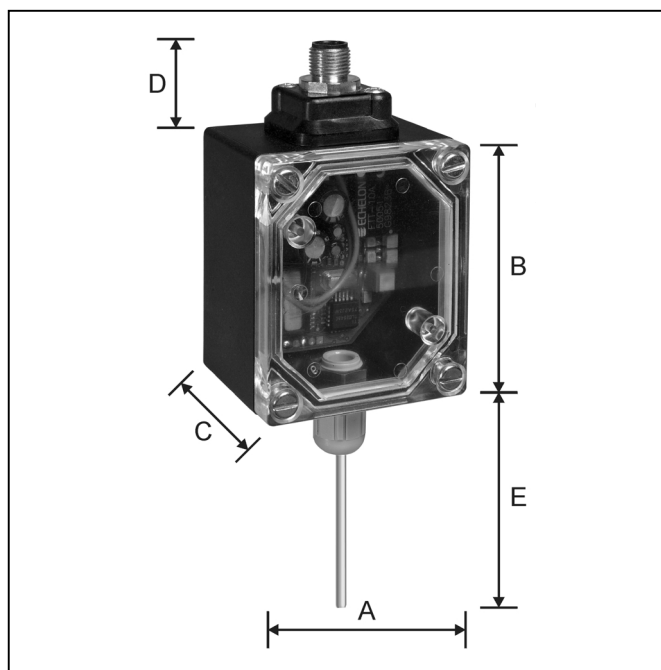
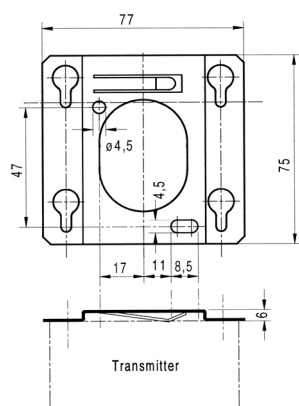


LON Temperature Sensor Industrial Room Sensor AFF-L

Technical Data



| | A | B | C | D | E |
|----|----|----|----|----|----|
| mm | 61 | 72 | 51 | 25 | 65 |



H 11



IP 65

Features

- LONMark[®] temperature profile #1040
- Uses Echelon LONTalk[®] protocol
- Factory-configured default parameters
- LON service and operation LED visible without disassembly
- Protection class IP 65
- Easy plug connection
- Uses FTT 10A Transceiver
- Barcode with Neuron ID outside
- NTC 20 linearization

Technical Data

| | |
|--|--|
| Cable entry: | Plug connection M 12 four-pole (a four- or five-pole plug may be used) |
| Operating voltage: | 24 V AC \pm 20 % or 24 V...36 V DC |
| Materials: | Sensor housing: Macroton Sensor: 1.4571 |
| Protection class: | IP 65 |
| Installation: | Direct on the wall via H 11 bracket |
| Linearity: | Range 0...70 °C \pm 0.8 K |
| Working range: | 0...70 °C |
| Measuring element: | NTC 20 |
| Transceiver and profile: | FTT 10A Profile 1040# |
| Ambient temperature: | 0...+50 °C |
| Accessories included in delivery: | Plug M 12 five-pole Mounting bracket H 11 |

Connection diagram

