

- (D) Montageanweisung - - - - - Elektrischer Ventilantrieb
- (F) Instructions d' Installation - - - - - Servomoteur de Vanne
- (I) Istruzioni per l' Installazione - - - - - Attuatore elettrico lineare
- (NL) Installatievoorschrift - - - - - Lineaire elektrische klepmotor
- (DK) Installationsinstruks - - - - - Elektrisk linjær ventilmotor
- (N) Installationsinstruksjoner - - - - - Elektrisk ventilmotor
- (FIN) Asennusohje - - - - - Sähköinen lineaarinen venttiilin toimilaitte
- (S) Installations Instruktioner - - - - - Linjärt ventilställdon
- (E) Instrucciones de montaje - - - - - Actuador eléctrico lineal

ML7420G

ELECTRIC LINEAR VALVE ACTUATORS WITH LON COMMUNICATION

INSTALLATION INSTRUCTIONS

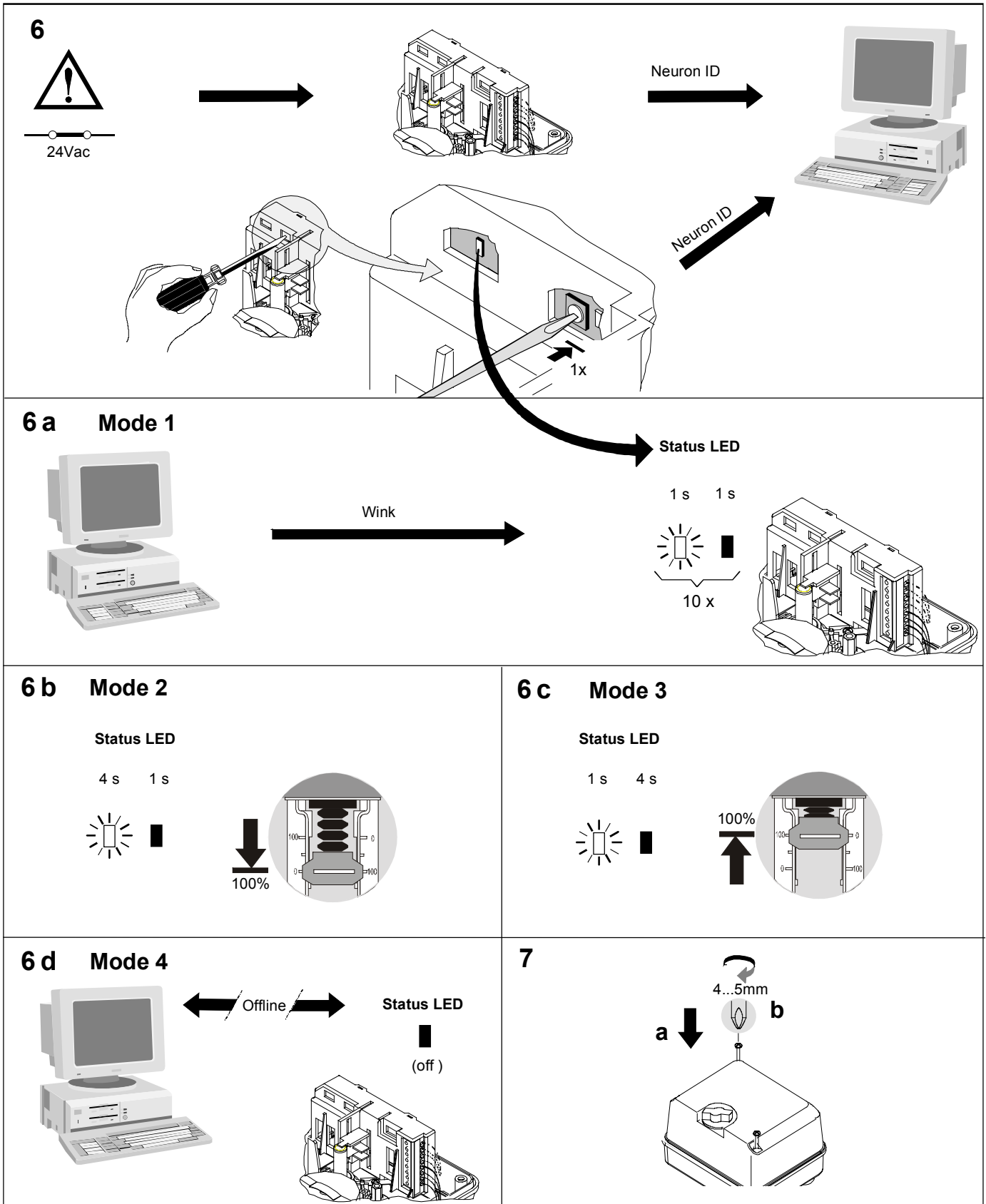
1 Mounting dimensions: Minimum clearance of 80mm above the actuator and 100mm to the side. A screwdriver icon indicates the mounting point.

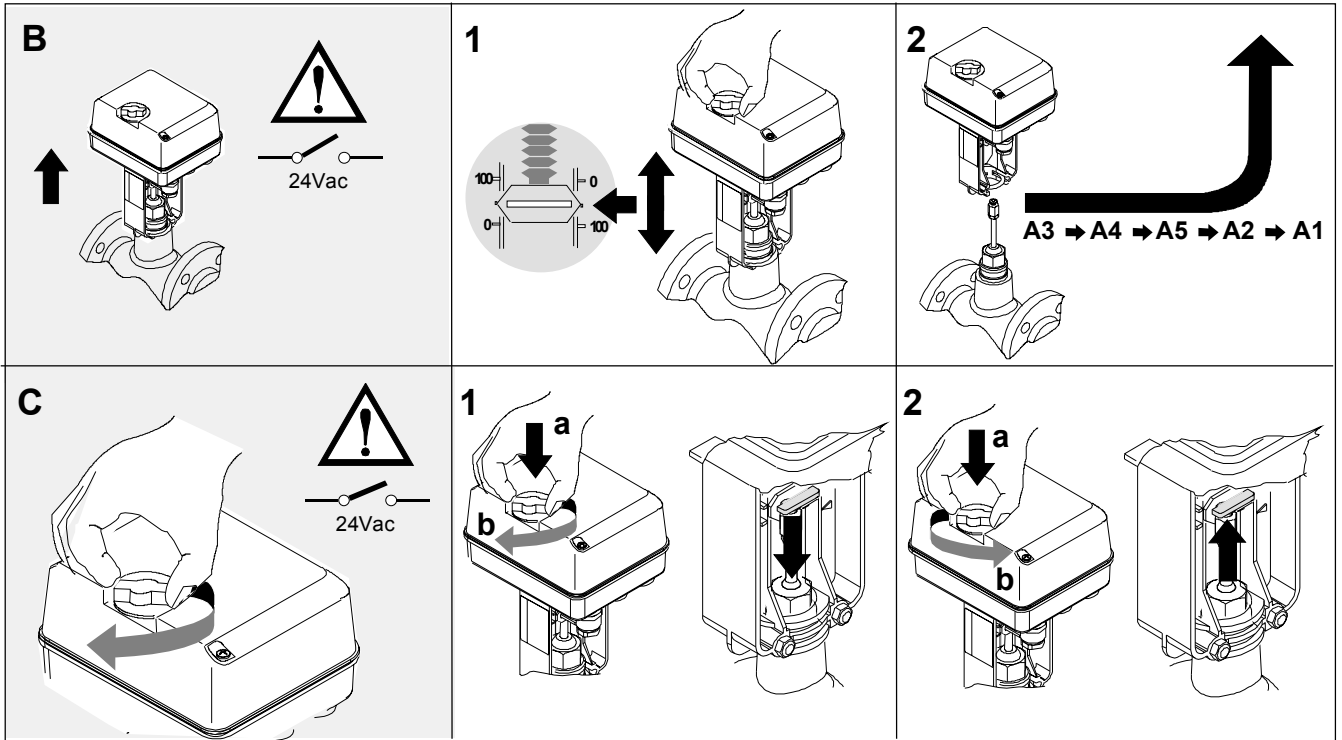
2 Mounting the actuator to the valve body. Labels a, b, c, d, e, f indicate the components and steps involved.

3 Adjusting the actuator stroke. A 4...5mm adjustment screw is shown. A warning symbol indicates 24Vac. A switch symbol is also present.

4 Electrical wiring. Labels a, b, c, d, e, f indicate the connection points for power (24V ~, 24V ⊥) and LON communication (LON A, LON B). A 3mm dimension is noted for the terminal block.

5 Terminal block connection. The diagram shows the terminal block for three models: ML7420 G1004, ML7420 G1012, and ML7420 G1020. The G1020 model includes Triac 1 and Triac 2 terminals. A warning symbol is shown next to the Triac terminals.





Honeywell

Automation and Control Solutions

Honeywell GmbH
Böblinger Straße 17
D-71101 Schönaich
Phone: (49) 7031 63701
Fax: (49) 7031 637493

Subject to change without notice. Printed in Germany

EN1B-1017GE02 R0903

Manufacturing location is certified according to 