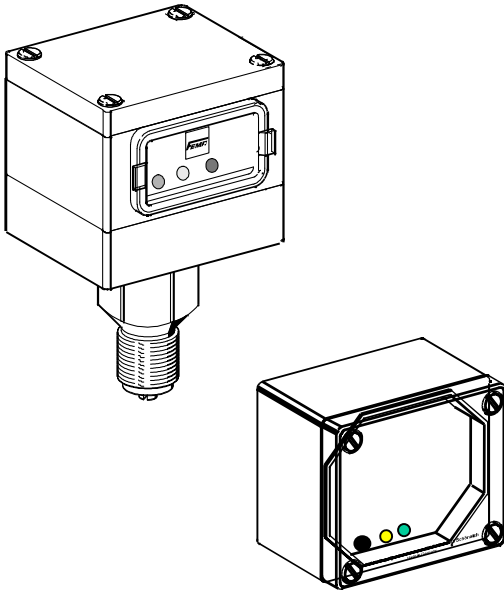


Fitting and Operating Instruction

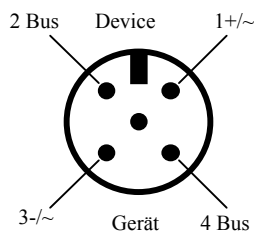


Low Pressure Sensors

General

A qualified installer has to carry out and to supervise mounting and first operation of the appliance

Connection diagramm



Description

The Fema LON series is provided with default configuration settings from the factory (figure 3). Using standard Echelon configuration tool or LNS based tools, the sensor can be configured with job-specific settings. The power and bus connection is provided by a M12 plug (included in delivery).

Types:

SN025-355-L, SKVN250-L, SKN1250-L,
SKVN250-L, SKVN1250-L

Safety Instruction !

Mounting

- Tighten only with the screwdriver applied to the hexagon of the SN pressure sensor.
- You never use housing as lever arm and do not turn the housing.

Electrical wiring and power

- The unit is supplied with 24VAC or 24 to 36VDC. With a DC power supply pay attention to correct polarity. The device can be destroyed if the connection is faulty. Connect the appliance to the plug as shown in connection diagramm.
- You never apply a voltage higher 48 V to one of the terminals.

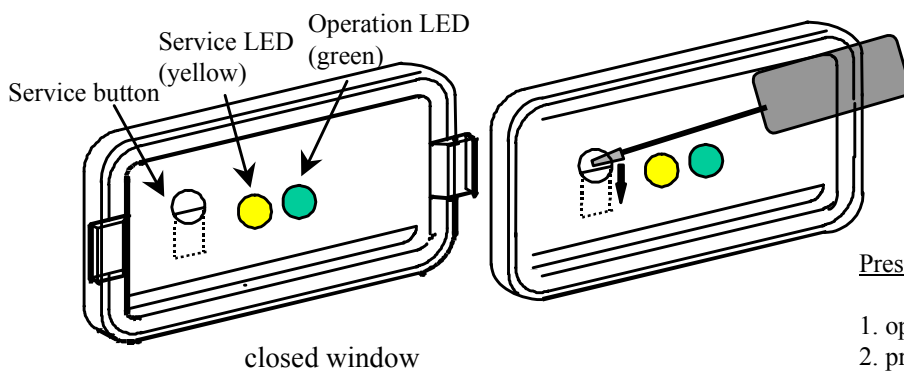
Operation LED (green)

LED task, error handling:	priority	set nvo_press invalid	set nvo_limit invalid	LED blink quantity (*) 1 = on 0 = off (16 steps)
LP_Status.VrefFail (1)	1	y	y	1010000000000000
LP_Status.LimitError (2)	2	n	y	1010100000000000
wink command active	3	n	n	1111111100000000
normal run	4	n	n	1111111111111111

(*) The duration of one step is: 150ms

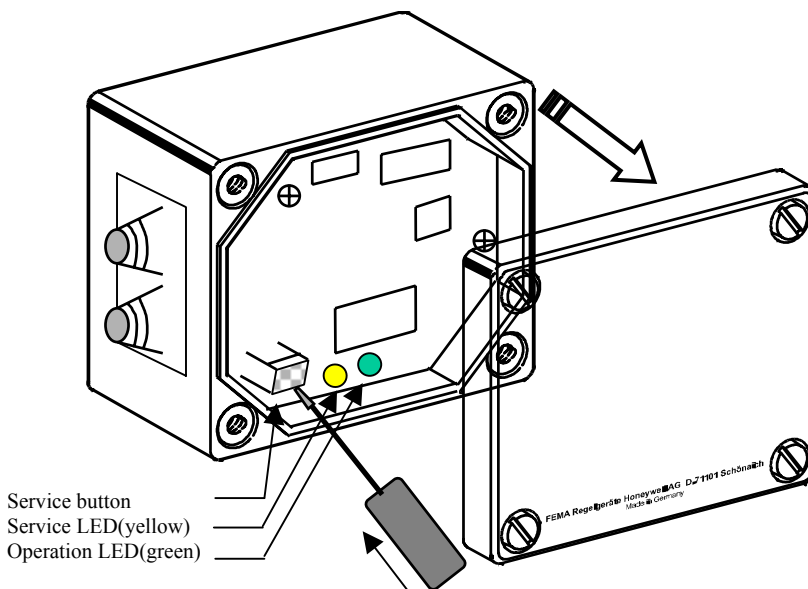
(1) Operation power to low
In this case the sensor element is measuring wrong pressure values.
All pressure values are set to invalid.

(2) Low limit (nciLimitLow) is set higher than a high limit (nciLimitHigh).



Press service button

1. open the window
2. press button cautiously down (until service LED goes on)
3. Neuron ID is sending
4. close the window



Safety Instruction

Do not touch the plane with the screw driver.

For function of service LED and service button see Echelon documentation.

Limits and Hysteresis

The graph in Figure 1 shows the main application.

An input voltage signal measured with the onboard ADC is converted to a pressure value in the range between `nciRangeMin` and `nciRangeMax`. In this range four limit values can be activated:

(for low pressure application the names have a "P" added):

`nciLimitLow(P)1`, `nciLimitLow(P)2`, `nciLimitHigh(P)1`, `nciLimitHigh(P)2`.

When the LimitHigh values are reached (coming from low pressures) a relating alarmvalue (network output variable) is set:

`nciLimitHigh(P)1` sets `nvoLimitHigh1`,

`nciLimitHigh(P)2` sets `nvoLimitHigh2`.

When the LimitLow values are reached (coming from high pressures) a relating alarmvalue (network output variable) is set:

`nciLimitLow(P)1` sets `nvoLimitLow1`,

`nciLimitLow(P)2` sets `nvoLimitLow2`,

The alarmvalue for the LimitHighs is reset when the pressure value falls under the limit and its Hysteresis:

`nciHystHigh(P)1` belongs to `nciLimitHigh(P)1`,

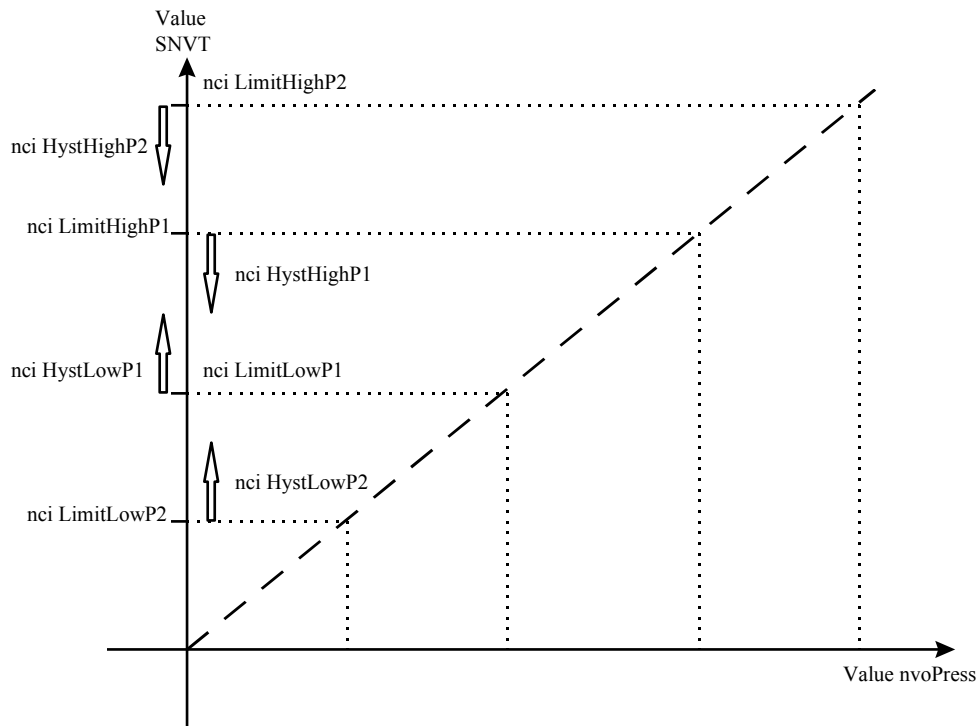
`nciHystHigh(P)2` belongs to `nciLimitHigh(P)2`.

The alarmvalue for the LimitLows is reset when the pressure rises over the limit and its Hysteresis:

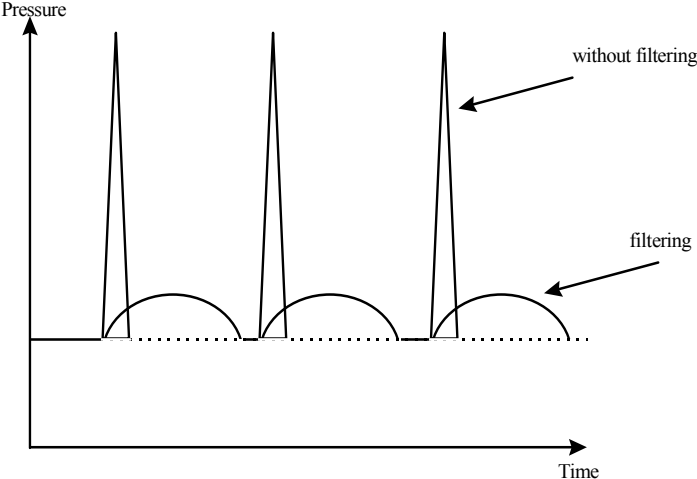
`nciHystLow(P)1` belongs to `nciLimitLow(P)1`,

`nciHystLow(P)2` belongs to `nciLimitLow(P)2`.

Alarm values (Figure 1)



Filtering (figure 2)



Safety Instruction
The higher the filter value (nciFilter rating)
The lower is the resulting peak and the
reaction time

Description of the used SNVT/ SCPT (figure 3)

This table shows all used standard network variables.

Low pressure application with *Pressure Sensor Profile1030* (all following NVs are used for this applications)

Network Variable / Self documentation string	SNVT type {Default value}	Range	Network outputs: Send conditions / Service	Description
nvoLimitHigh1 ("@0 # 2;")	SNVT_switch {OFF for delivery}	OFF = {0, false} ON = {200, true} invalid = {x, 255}	Any Change / acknowledge Service	Alarming ON if nvoPress is higher than nciLimitHigh1 OFF if nvoPress is lower than nciLimitHigh1- nciHystHigh1
nvoLimitLow1 ("@0 # 4;")	SNVT_switch {OFF for delivery}	OFF = {0, false} ON = {200, true} invalid = {x, 255}	Any Change / acknowledge Service	Alarming ON if nvoPress is lower than nciLimitLow1 OFF if nvoPress is higher than nciLimitLow1+ nciHystLow1
nvoLimitHigh2 ("@0 # 3;")	SNVT_switch {OFF for delivery}	OFF = {0, false} ON = {200, true} invalid = {x, 255}	Any Change / acknowledge Service	Alarming ON if nvoPress is higher than NciLimitHigh2 OFF if nvoPress is lower than nciLimitHigh2 - nciHystHigh 2
nvoLimitLow2 ("@0 # 5;")	SNVT_switch {OFF for delivery}	OFF = {0, false} ON = {200, true} invalid = {x, 255}	Any Change / acknowledge Service	Alarming ON if nvoPress is lower than nciLimitLow2 OFF if nvoPress is higher than nciLimitLow2+ nciHystLow2
nviAMN ("@0 # 9;")				only for factory
nviAMX ("@0 # 10;")				only for factory
nvoRAW ("@0 # 8;")				only for factory
nroSWversion ("@0 # 11;")	SNVT_char_ascii	Software version number 0...255	polled	Software vision number
nciFilterRating ("&1,0,0\x80,93")	SNVT_lev_cont {0}	0...200 (=0 .. 100%, 0.5% steps) 0 = No filtering		see figure 2
nvoPress ("@0 1;")	SNVT_press {pressure for delivery}	-3276.8 .. 3276.6 kPa 0x7FFF = 3276.7 kPa = Invalid	nciSendOnDelta, nciMaxSendTime, nciMinSendTime, change of nvoLimitHigh,Low / unacknowledge Service	actual pressure value
nvoPrecisePress ("@0 2;")	SNVT_press_p {pressure for delivery}	-32768 .. 32766 Pa 0x7FFF = 32767 Pa = Invalid	nciSendOnDelta, nciMaxSendTime, nciMinSendTime, change of nvoLimitHigh,Low / unacknowledge Service	actual pressure value
nciSendOnDelta ("&1,0,0\x80,27;")	SNVT_lev_percent {5 %}	0..100% 0 = Send any change		for delivery 5%
nciMinSendTime ("&1,0,0\x80,52;")	SNVT_time_sec {5 sec}	0..6553.4 sec 0 = Maximum refresh rate		refresh rate of pressure value and alarming
nciMaxSendTime ("&1,0-,0\x80,49;")	SNVT_time_sec {300 sec}	0..6553.4 sec 0 = No automatic update		
nvoPressPercent ("@0 # 1;")	SNVT_lev_percent {pressure for delivery}	-163,84%...163,83% (res.=0,005%) 0x7FFF = Invalid	nciSendOnDelta, nciMaxSendTime, nciMinSendTime, change of nvoLimitHigh,Low / unack. Service	actual pressure value in % of total alarming
nciLimitLowP1 ("&1,0,0\x80,18;")	SNVT_press_p {nviRmn for delivery}	-32768 .. 32766 Pa 0x7FFF = 32767 Pa = No Limit Check		for delivery set to * minRange value 1

Network Variable / Self documentation string	SNVT type {Default value}	Range	Network outputs: Send conditions / Service	Description
nciLimitHighP1 ("&1,0,0\x80,9;")	SNVT_press_p {nviRmx for delivery}	-32768 .. 32766 Pa 0x7FFF = 32767 Pa = No Limit Check		for delivery set to * maxRange value 1
nciLimitLowP2 ("&1,0,0\x80,19;")	SNVT_press_p {nviRmn for delivery}	-32768 .. 32766 Pa 0x7FFF = 32767 Pa = No Limit Check		for delivery set to * minRange value 1
nciLimitHighP2 ("&1,0,0\x80,10;")	SNVT_press_p {nviRmx for delivery}	-32768 .. 32766 Pa 0x7FFF = 32767 Pa = No Limit Check		for delivery set to * maxRange value 1
nciHystHighP1 ("&1,0,0\x80,11;")	SNVT_press_p {0 Pa}	-32768 .. 32766 Pa 0 = No Hysteresis 0x7FFF = 32767 Pa = No Hysteresis		HystHigh1 Delivery default =0
nciHystHighP2 ("&1,0,0\x80,12;")	SNVT_press_p {0 Pa}	-32768 .. 32766 Pa 0 = No Hysteresis 0x7FFF = 32767 Pa = No Hysteresis		HystHigh2 Delivery default =0
nciHystLowP1 ("&1,0,0\x80,13;")	SNVT_press_p {0 Pa}	-32768 .. 32766 Pa 0 = No Hysteresis 0x7FFF = 32767 Pa = No Hysteresis		HystLow1 Delivery default =0
nciHystLowP2 ("&1,0,0\x80,14;")	SNVT_press_p {0 Pa}	-32768 .. 32766 Pa 0 = No Hysteresis 0x7FFF = 32767 Pa = No Hysteresis		HystLow2 Delivery default =0
nviRmn ("@0 # 6;")	SNVT_press_p	-32768 .. 32766 Pa (no invalid check)		only for factory
nviRmx ("@0 # 7;")	SNVT_press_p	-32768 .. 32766 Pa (no invalid check)		only for factory

* minRange and maxRange values are the intended pressure values of the sensor

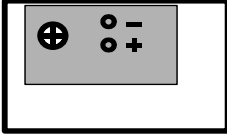
Technical Data and Installation

Cable entry Plug connection M12 four-pole (a four- or five-pole plug may be used) Operating voltage 24V AC \pm 20% or 24V...36V DC	Transceiver and profile FTT 10A Profile 1030# Ambient temperature 0....+50°C	Protection class IP 65 Materials Housing: Makrolon
--	--	---

Type series SN...-355-L

Pressure port G ½ male Wrench size SW 27 Materials Sensor housing 1.4571 Pressure membrane 1.4435	Installation The series SN sensors are fitted directly to the pipeline or the pressure vessel.	Max. medium temperature -30....+100°C Linearity \leq 1% FS Measuring method piezoresistiv
--	--	---

Type series SK...-L

Pressure port 4,8 mm dia Sensor materials Glass filled nylon, ceramic AL ₂ O ₃ , silicon RTV-Glue, bond wires Linearity \leq 1% FS Medium Air, non-inflammable and non-aggressive gases	Installation With mounting bracket H 11 direct on the wall included in delivery + high pressure port - low pressure port 	Max. medium temperature -25....+85°C Compensated temperature range 0...+50°C Measuring method piezoresistiv
---	---	---