



## Multiplexer

### Features

- ▶ NTSC and PAL selectable by users
- ▶ Full Triplex operation allows simultaneous recording, playback and live viewing
- ▶ Multiple monitor outputs ( 1 Main, 4 Auxiliary) allow simultaneous multi-camera and multi-screen viewing
- ▶ Each Camera has a programmable 256-target (16 X 16) motion-detection grid
- ▶ Non volatile program memory saves all user setting and protects against power outages
- ▶ Up to 4 cameras can associated with a single contact closure alarm
- ▶ Linear Zoom in and out up to 32 times
- ▶ RS-232 or RS-485 connection
- ▶ A large selection of user selectable display format
- ▶ Playback videotapes recorded with many other multiplexer

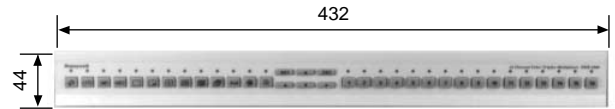


## HDX-1600

### Technical Information

Model	HDX-1600
Power Adapter	110/220V AC, Universal Adapter
Power Source	12V DC/3A
Camera Input	1.0Vp-p, 75 Ohms
Camera Output	1.0Vp-p, 75 Ohms
VCR Input	1.0Vp-p, 75Ohms, 1.0Vp-p, 75Ohms(Y), 0.286Vp-p, 50hms(C)
VCR Output	1.0Vp-p, 75Ohms, 1.0Vp-p, 75Ohms(Y), 0.286Vp-p, 50hms(C)
Camera Alarm Input	16EA
Camera Alarm Output	2EA (NO/NC/Common)
Alarm Hold Time	20sec/Default : 0~99sec / Selectable in MENU
Alarm Buzzer	On/Off
Display Option	Triplex (Live & Playback at Same Time) Full Sequence Cameo Sequence (Any 1 Position) Split or PIP Mode Page Sequence (2x2, 3x3)-Squish, 4-Way, 9-Way Freeze All Freeze One Camera Camera Assign Priority Assign (1Cam Only) Motion Tracking Box Digital Contrast Enhancer
Remote Control	RS-232 (1,200 ~ 9,600 bps) RX/TX RS-485 (1,200 ~ 9,600 bps) RX/TX Mouse Control
Resolutions	
Sampling	720 x 480
Full (Active)	648 x 448
1/4 Size	324 x 224
1/9 Size	216 x 149
1/16 Size	162 x 112
4/9 Size	432 x 298
9/16 Size	486 x 336
VCR Out (Full)	720 x 480
Spot Out	Analog (4EA)
Dimensions (WxHxD)	432 x 44 x 310 mm
Weight	2.4kg

### Dimensions & Connections



(Unit : mm)

#### SYSTEM Configuration

